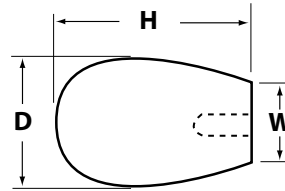




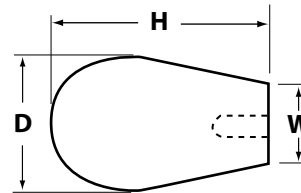
Oval Ball Knobs

These phenolic oval and tapered oval ball knobs are offered with a brass threaded insert.



PHENOLIC OVAL BALL KNOB WITH BRASS THREADED INSERT

P/N	DIA.	Height	Width	Thread	Depth
IL400-4X38	1-1/8	1-1/2	1/2	1/4-20	1/2
IL400-5FX50	1-1/8	1-1/2	1/2	5/16-24	1/2
IL400-5X50	1-1/8	1-1/2	1/2	5/16-18	1/2
IL400-6FX50	1-1/8	1-1/2	1/2	3/8-24	1/2
IL400-6X50	1-1/8	1-1/2	1/2	3/8-16	1/2
IL400-7FX75	1-1/8	1-1/2	1/2	7/16	1/2



PHENOLIC TAPERED OVAL BALL KNOB WITH THREADED INSERT

P/N	DIA.	Height	Width	Thread	Depth
IL402-1X31	3/4	1-1/4	3/8	6-32	5/16
IL402-2X31	3/4	1-1/4	3/8	8-32	5/16
IL402-3FX31	3/4	1-1/4	3/8	10-32	5/16
IL403-4X44	1	1-5/8	1/2	1/4-20	7/16
IL403-5X44	1	1-5/8	1/2	5/16-18	7/16
IL403-6X50	1	1-5/8	1/2	3/8-16	1/2
IL404-3X31	1-3/16	1-7/8	9/16	10-24	5/16
IL404-3FX31	1-3/16	1-7/8	9/16	10-32	5/16
IL404-4X44	1-3/16	1-7/8	9/16	1/4-20	7/16
IL405-4X44	1-5/8	2-1/2	7/8	1/4-20	7/16
IL405-5X44	1-5/8	2-1/2	7/8	5/16-18	7/16
IL405-6X50	1-5/8	2-1/2	7/8	3/8-16	1/2
IL405-7X62	1-5/8	2-1/2	7/8	1/2-13	5/8



INTERNATIONAL EQUIPMENT COMPONENTS, INC.

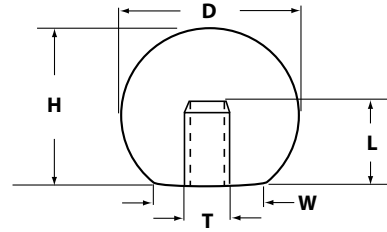
Phone: 562.597.4533 eMail: sales@iec-corp.com

Web: www.equipmentknobs.com | www.iec-corp.com

KNOBS
ROUND BALL KNOBS
KNURLED KNOBS

Round Ball Knobs

These round phenolic ball knobs are offered in female thread with zinc plated steel insert and press-fit hole types.

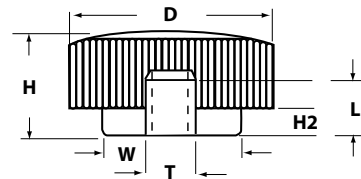


ROUND PHENOLIC PHENOLIC BALL KNOBS

P/N (female)	P/N (hole type)	Thread	D	H	Hole Depth	Press-Fit Stud
IL230F-3F		10-32	5/8	9/16		
IL231F-3	IL231H	10-24	3/4	11/16	1/2	13/16
IL232F-4		1/4-20	3/4	11/16		
IL233F-4	IL233H	1/4-20	1	7/8	5/8	1/4
IL234F-5		5/16-18	1	7/8		
IL235F-5	IL235H	5/16-18	1-1/4	1-3/16	9/16	5/16
IL236F-6	IL236H	3/8-16	1-1/2	1-7/16	3/4	3/8
IL237F-7	IL237H	1/2-13	1-3/4	1-11/16	13/16	1/2

Knurled Knobs

Phenolic knurled knobs are offered with a brass threaded insert, a zinc-plated steel stud or a stainless steel stud.



PHENOLIC KNURLED KNOB WITH BRASS THREAD INSERT

P/N	DIA.	Height	Width	H2	Thread	Length
IL420-3FX38	1	1/2	11/16	5/32	10-32	3/8
IL420-3X38	1	1/2	11/16	5/32	10-24	3/8
IL420-4X38	1	1/2	11/16	5/32	1/4-20	3/8
IL420-5X38	1	9/16	5/8	5/16	5/16-18	3/8
IL420A-4X44	1-3/8	3/4	3/4	3/8	1/4-20	7/16
IL420A-5X44	1-3/8	3/4	3/4	3/8	5/16-18	7/16
IL420B-5X44	1-7/8	1	1	1/2	5/16-18	7/16
IL420B-6X50	1-7/8	1	1	1/2	3/8-16	1/2